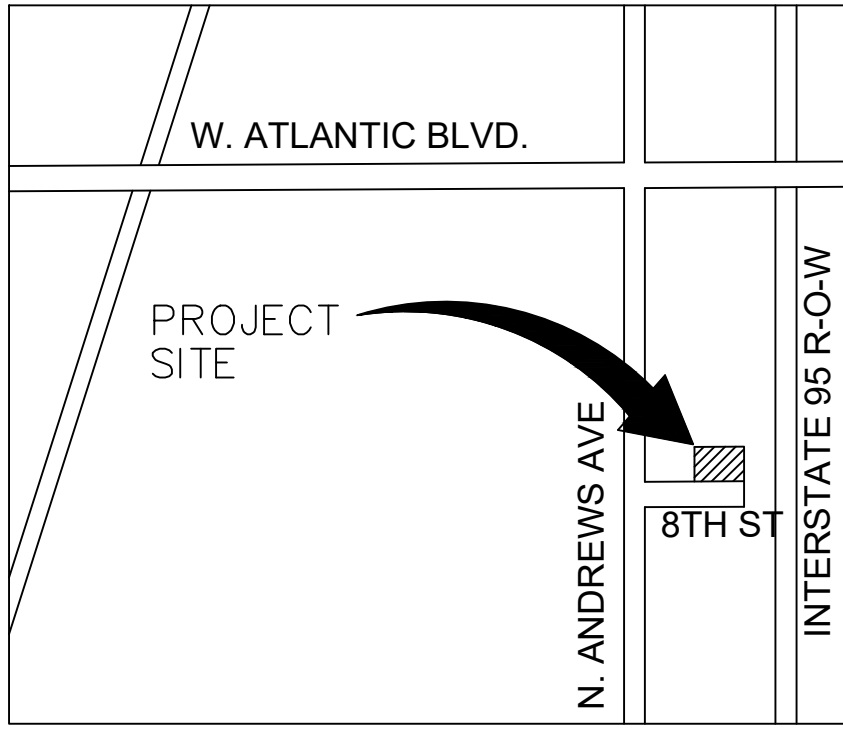
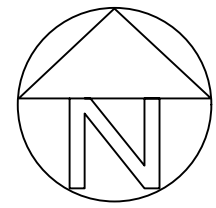
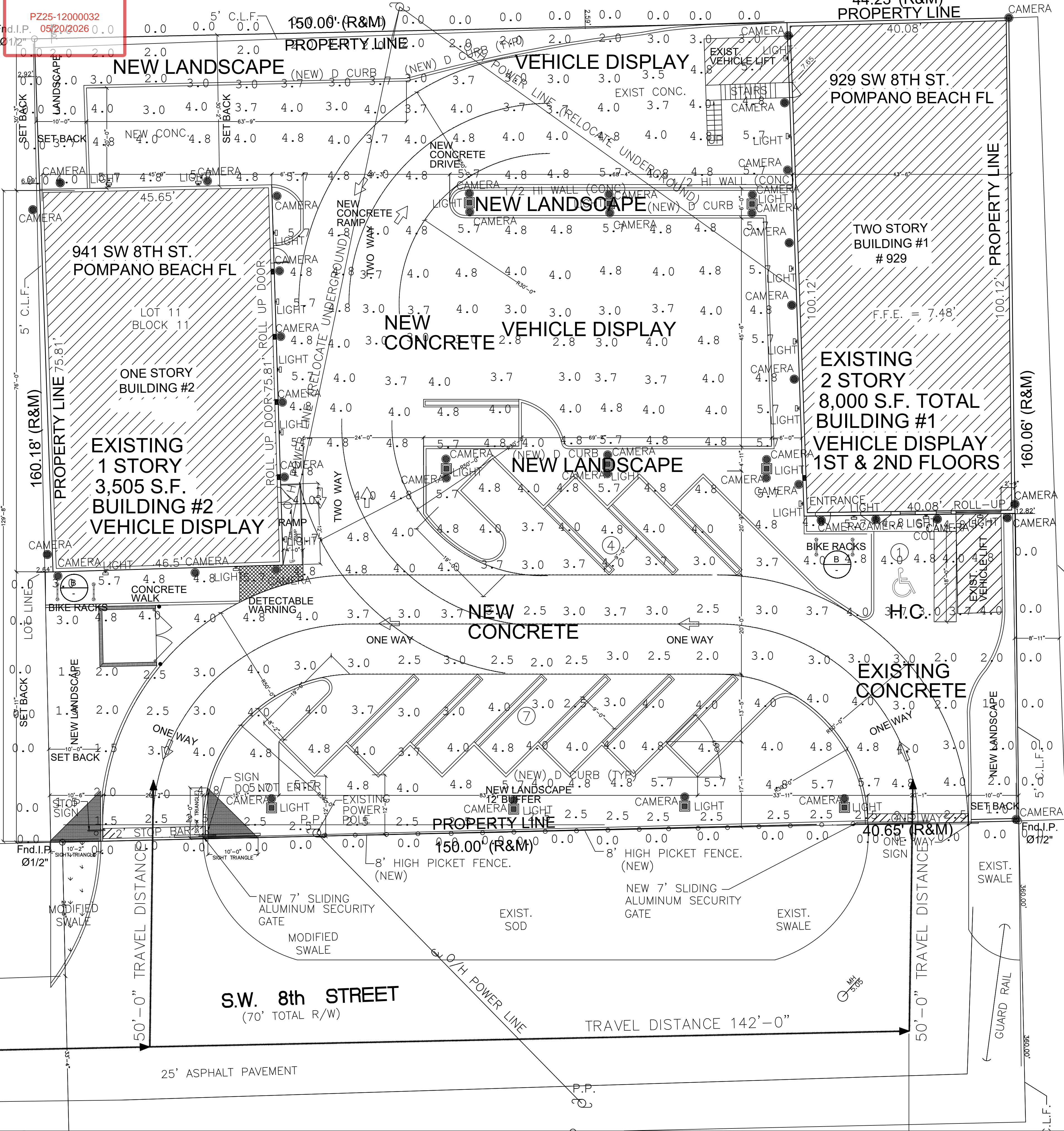


DRC

PZ25-12000032  
05/20/2026 0.0



VICINITY MAP

- WALL POLE MOUNTED LIGHT
- WALL MOUNTED CAMERA

INTERSTATE 95 R-O-W

EAST LIMIT OF LOT 8

PH-1

PHOTOMETRIC PLAN

SCALE: 3/32"=1'-0"

DRC

PZ25-12000032

09/03/2025

| REVISIONS: |  |
|------------|--|
| A          |  |
|            |  |
|            |  |
|            |  |
|            |  |
|            |  |
|            |  |
|            |  |
|            |  |

|                         |                         |
|-------------------------|-------------------------|
| DON ARPIN<br>P.E. 28585 | APPROVED SEAL/SIGNATURE |
|-------------------------|-------------------------|

THE NEW AUTO TOY STORE

929 & 941 S.W. 8TH STREET  
POMPANO BEACH, FLORIDA 33069

DON ARPIN MSPE PE #28585  
ASSOCIATED GENERAL KINETICS, LLC  
COA #26073

4920 NORTH DIXIE HIGHWAY  
FORT LAUDERDALE, FL 33334  
OFFICE (954) 772-8345 FAX: (954) 772-7478

CAL 6:14

TO THE BEST OF MY KNOWLEDGE, THE PLANS AND SPECIFICATIONS COMPLY WITH THE APPLICABLE MINIMUM BUILDING CODES AND THE APPLICABLE FIRE-SAFETY STANDARDS AS DETERMINED BY THE LOCAL AUTHORITY IN ACCORDANCE WITH THIS SECTION AND CHAPTER 633, FLORIDA STATUTES

| DRAWN:          |           |
|-----------------|-----------|
| DATE:           | 7/29/2025 |
| PROJECT NUMBER: |           |
| SHEET NUMBER:   | PH-1      |